



CMM

TECNOLOGIE METALLURGICHE AVANZATE

affissione.net

CMM srl

Via Marchionale 72
46046 Medole (MN) Italy
Tel .++39 0376 898150
Fax ++39 0376 868335
mail: info@affissione.net



System production and metallic structures for posting

C.M.M. is specialized in the production of [metallic structures for advertising](#) in multiple combinations, both for structural shape than for the use of different types of material and painting (suitable for exteriors).

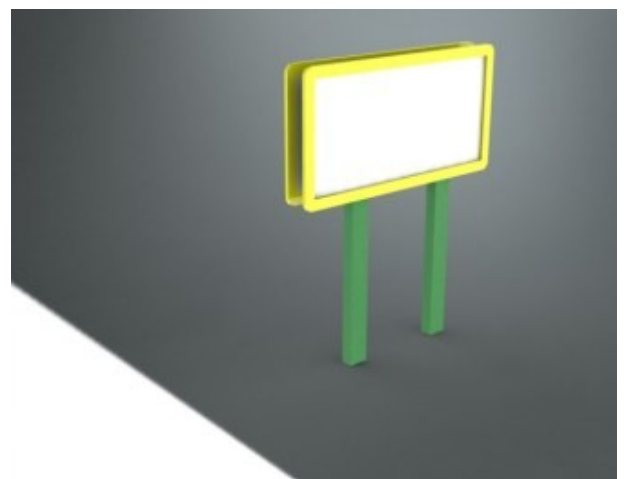
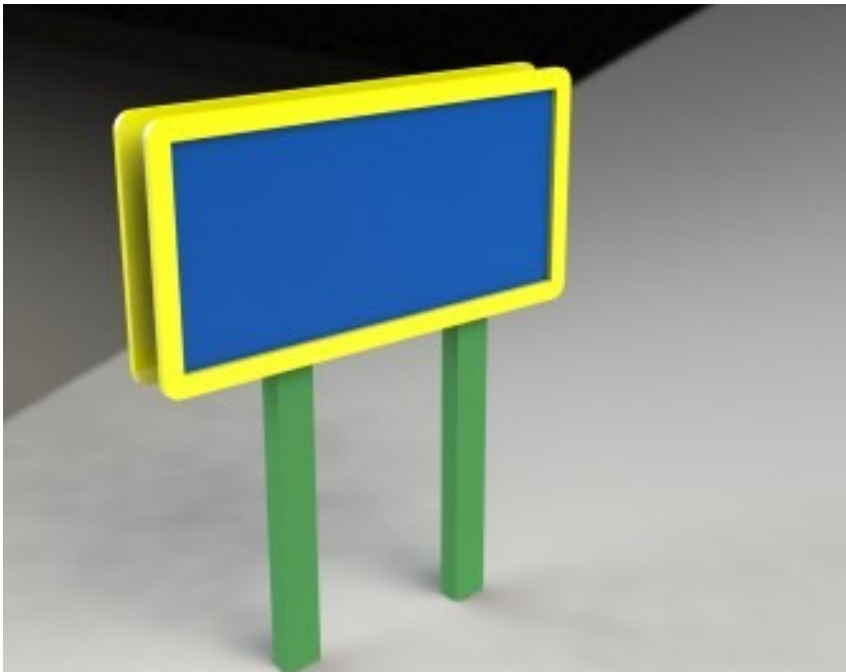
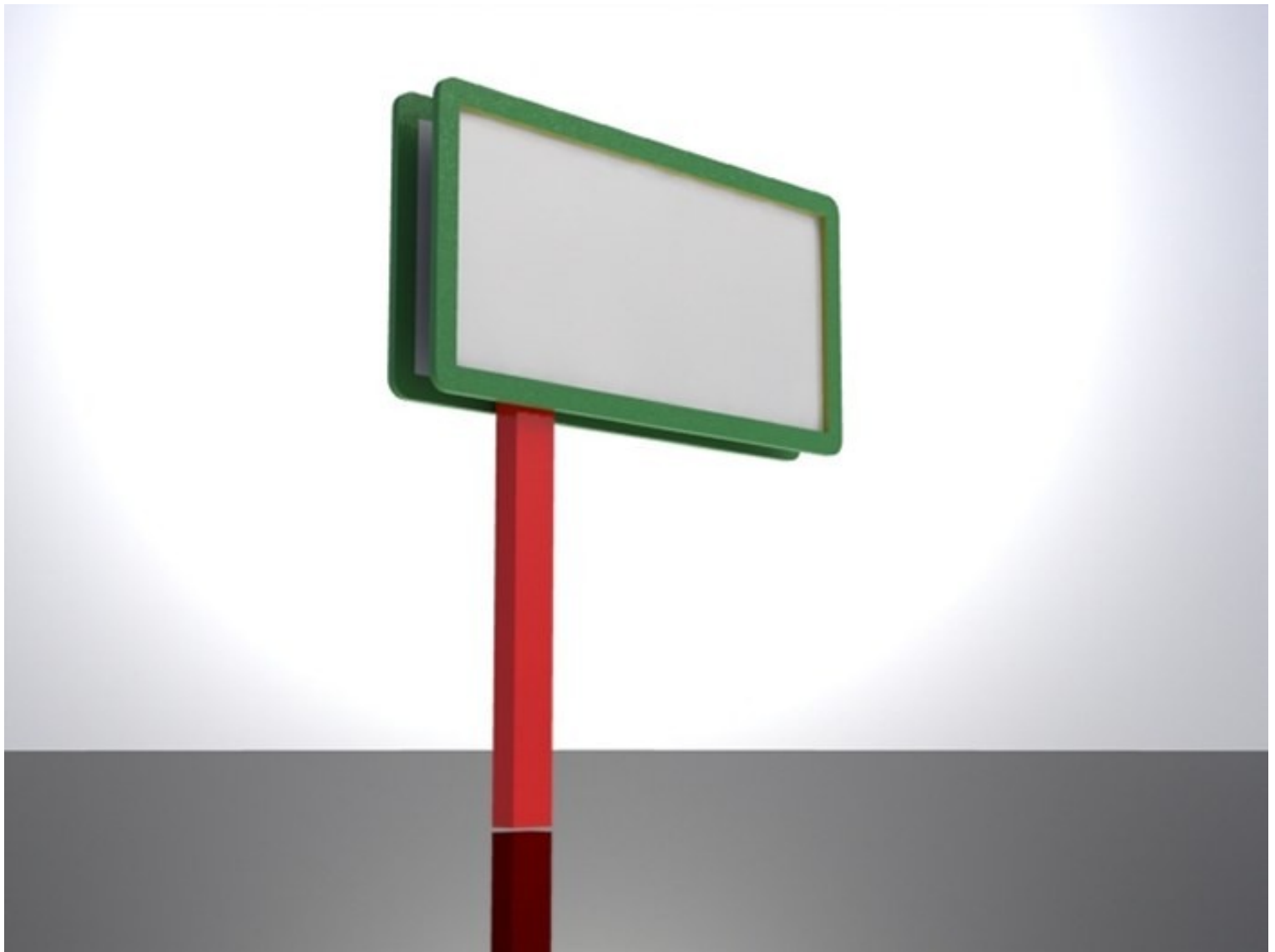
Our designers are able to realize barriers and [advertising structures](#) in general, also according to the requests of the final customer, since we have versatile machine tools with a very high technological contents, such as: laser cutting for sheets, laser cutting for tubes, punching, robotic bending, etc.

In addition to the products above mentioned, C.M.M. produces [special structures](#) for metallic carpentry [suitable for advertising](#) on drawings supplied by customers.

We can produce:

- Advertisement 1,40 x 2,00 meters achievable in various versions of shape and price, both in horizontal or vertical position;
- Movable advertisement;
- Posting 6,00 x 3,00 meters achievable in various versions of shape and price, with the possibility to be single-faced, bifacial, three faced and mural;
- Various dimensions of advertising barriers;
- General metallic structures from customers' drawings.





CMM srl
Via Marchionale 72
46046 Medole (MN) Italy
Tel .++39 0376 898150
Fax ++39 0376 868335
www.affissione.net



Laser pipe cutting from 10 to 508 mm

CMM is one of the main European companies present in the laser cutting field for pipes, tubular sections and special profiles. The pipe division occupies an area of 12,000 square metres, 5,000 of which are covered, and employs 90 persons.

Here, we have installed **8 latest generation laser systems** with the possibility of processing pipes with a minimum section of 10 mm up to a maximum of 508 mm all the way up to a useful length of 14 metres.

Our pipes division is equipped with different machines in order to be competitive in price for small, medium and large pipes.

We program our machines with sophisticated three-dimensional CAD/CAM drawing and design software and import drawings created in other software applications in the following formats: dxf , sat , dwg, step, igs, xt .

The strength of a group



Besides working pipes and sheets, **CMM** is also part of **Gruppo Manni** from Verona, Leader Company in Europe in the trade, distribution and working of pipes, beams and steel sheets .

Competitive transport costs

CMM is located in the North of Italy where the major European pipe producers are distributed.

This gives CMM the possibility to be very competitive, since foreign companies purchasing pipe in Italy can buy from CMM the working without additional transport costs.

CMM....SPEAKS YOUR LANGUAGE !!!

We opened a commercial office to be able to follow all your needs, who we have people who speaks : English, German and French.

Our purpose is to help you in the purchase of our material, avoiding any kind of problem in understanding each other.

The contact person is : Mrs Sonia Beschi, e-mail : sonia.beschi@cmmlaser.it mobile-phone +39 338 3660874

Services that we offer to our customers :

- projects for steel structures
- deliveries all around the world

Provided guaranties :

- ISO 9001:2000 certification, starting from 1996
- certification for the employed raw material
- Guaranty for the continuity of the produced material

References :

- we are following more that 3.000 customers in Europe and North Africa.

We invite you therefore to visit our website to know more about us. Our address is:
www.cmmlaser.it